

# DEDICATED YEAR ROUND PICKLEBALL FACILITIES



A Faster  
Way to Build

Pickleball  
courts





---

CONNECTING COMMUNITY

---

# NORTH AMERICA'S FASTEST GROWING SPORT

Pickleball is currently the nation's fastest growing sport with a documented 4.8 million players across the country. A sport that has proven its popularity for all ages, pickleball has become a hub for communities to connect, stay active and have fun together.

## Year-Round Play

Along with the rapidly expanding popularity of the sport, the demand for dedicated indoor facilities is also on the rise. In many areas, playing outdoors is not an option year-round. Imagine temperature controlled, dedicated pickleball facilities that provide a safe, spacious area for several courts, optional food and beverage area, locker rooms, saunas and more!



# WHY BUILD PICKLEBALL FACILITIES WITH SPRUNG?

## Exceptional Build Speed

Build in a fraction of the time required for a conventional building.

## Lower Costs

Build at a significantly lower cost than a conventional building.

## Interior Advantage

The interior of a Sprung structure is engineered and designed for an optimized playing environment with great acoustics, natural light and temperature control.

## Flexible Design

Complete customization from the ground up.





A FASTER WAY TO BUILD

# EXCEPTIONAL BUILD SPEED

Sprung Structures creates flexible, cost-effective indoor spaces that promote safe and active participation.

Sprung delivers a multi-functional space suitable for any sport or activity. With over two million square feet of available inventory, our prep time to delivery is short, and your building is completed 30% to 60% faster than any other building solution.

With the design and speed you need, Sprung will help to create a better, more active future for your community.



## HOW FAST IS FAST?

The following structures were built from ground-breaking to completion in four months.

19,500 square feet for Regis University Berce Athletic Training Center  
48,000 square feet for Relentless Life Center Sports and Recreation Complex

INTERIOR ADVANTAGE

# HIGH PERFORMANCE INTERIOR

The Sprung interior outperforms other building alternatives with natural light, an airtight building envelope for efficient temperature control, and optimized acoustic playing environment.



“

The acoustics are great, the lighting itself provides a bright environment ... It is a very dynamic and lively place to play.”

- Mario Amantea  
Hockey Director, Edge School

## HIGH PERFORMANCE INTERIOR

- Clean, bright highly-tensioned interior membrane saves finishing time and money

## LOW OPERATING AND ENERGY COSTS

- Airtight building envelope and fully-lofted fiberglass insulation system lowers overall operating costs

LOWER OVERALL COSTS

# SIGNIFICANT COST SAVINGS

There are many cost saving opportunities when building a Sprung structure. From operational cost savings to savings on construction materials and timelines, Sprung delivers a high-performance facility on time, and on budget.



The main reasons we decided to build a Sprung structure were the price model and the rapid construction timeline ...we were very impressed with the outcome.”

– Mike Redmond, Associate VP Physical Plant & Capital Projects, Regis University



## DESIGN FLEXIBILITY

# BUILD IT YOUR WAY

Your clear-span, column-free pickleball facility offers full versatility with a bright, spacious playing area, tall peak height and can include unlimited design customization such as:

- raised running track & viewing bleachers
- locker rooms & saunas
- mezzanines & conference rooms
- peak-integrated daylight panels
- custom doors & glazing walls
- food and beverage, dining facilities



## CUSTOM COLORS AND GRAPHICS

- Showcase your brand outside with Sprung's high-performance, guaranteed Dupont Tedlar or Kynar exterior membrane. Choose from a wide range of exterior colors and our new vinyl wrap graphics to elevate your brand.

“

The Sprung sports facility at Hanalani has been a tremendous blessing for our school. The versatility of courts for both volleyball and basketball, plus serving as a multi-use facility for PE and other activities has really expanded our school's creativity.”

– Jeremy Honold, Athletic Director, Hanalani School



# EXTRAORDINARY ALL-WEATHER DURABILITY

There are currently over 12,000 active Sprung Structures in 100 countries around the globe:

Sprung's unmatched expertise and experience delivers the world's most reliable, versatile and technically advanced structures.

Our structures are designed, engineered and tested to withstand extreme weather conditions, anywhere in the world.

Following Hurricane Irma in the U.S. Virgin Islands, the U.S. Federal Emergency Management Agency (FEMA) selected Sprung Structures to supply seven gymnasiums as emergency response stations.

The Sprung gymnasiums were engineered to withstand 175 mph wind loads per the 2018 International Building Code (IBC 2018).



In extreme winter weather conditions (100 km plus winds and temperatures of -35C) Sprung modified their construction process to allow mechanical and electrical contractors to work simultaneously, and reduce the overall schedule.”

– David Lunn, Director of Facilities,  
Christ the Redeemer Catholic Schools



## FEATURES AND ACCESSORIES

# UNLIMITED DESIGN FLEXIBILITY

Beyond the flexibility of Sprung's expandable modular design, add greater value and versatility by customizing the accessories (doors, windows, connecting corridors, graphic treatments, etc.).

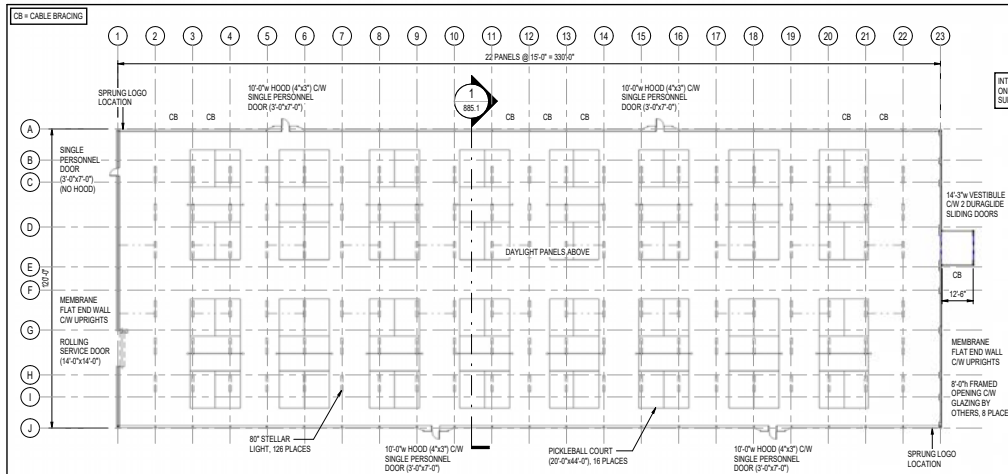
## PICKLEBALL FACILITY OPTIONS

Option 1: Engineered sunshade

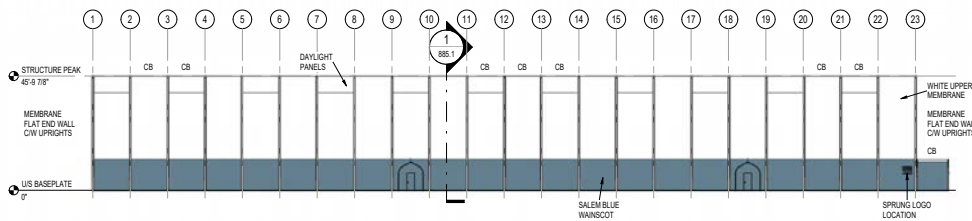
Option 2: Year-round climate-controlled facility



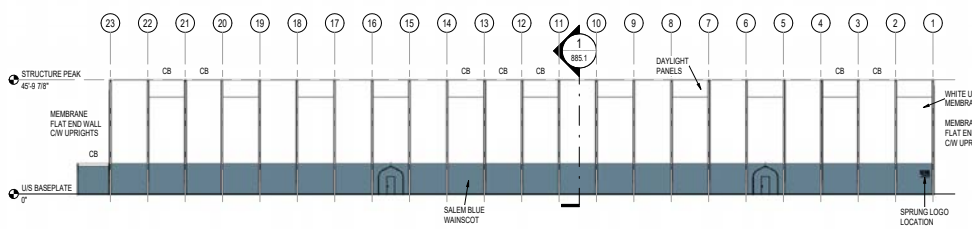
# 16 COURT LAYOUT



1 OPEN PLAN VIEW  
1" = 20'-0"



2 FRONT ELEVATION  
1" = 20'-0"



3 REAR ELEVATION  
1" = 20'-0"

ACCESSORIES				
CATEGORY	TYPE	SIZE	COMMENT	COUNT
CARGO DOOR	ROLLING SERVICE DOOR	14'-0" x 14'-0"	INTERIOR MOUNT	1
GLAZING	FE GLAZING	5'-0" x 8'-0"	FRAME ONLY	2
GLAZING	FE GLAZING	8'-0" x 8'-0"	FRAME ONLY	1
GLAZING	FE GLAZING	8'-0" x 8'-0"	FRAME ONLY	2
GLAZING	FE GLAZING	12'-11" x 8'-0"	FRAME ONLY	1
GLAZING	FE GLAZING	14'-11" x 8'-0"	FRAME ONLY	2
LIGHTING	STELLAR LIGHT		40"	128

PERSONNEL DOORS							
CATEGORY	TYPE	HOOD WIDTH	BEAM	DOOR SIZE	COMMENT	SWING	COUNT
HOOD	SPD	10'-0"	4"x3"	3'-0"x7'-0"	STANDARD	1	4

**DRAWING APPROVAL**

APPROVED  
 APPROVED WITH CHANGES NOTED

CONFIRMATION OF DESIGN LOADS AT SITE PER THE LOCAL BUILDING DEPT.

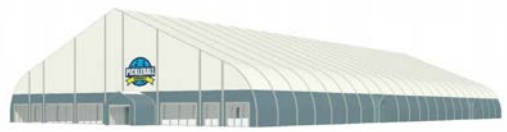
SIGNATURE: \_\_\_\_\_  
 DATE: \_\_\_\_\_

BUILDING CODE #1 YEAR: \_\_\_\_\_  
 WIND LOAD (650): \_\_\_\_\_  
 SNOW LOAD (5k): \_\_\_\_\_  
 SNOW LOAD (S): \_\_\_\_\_

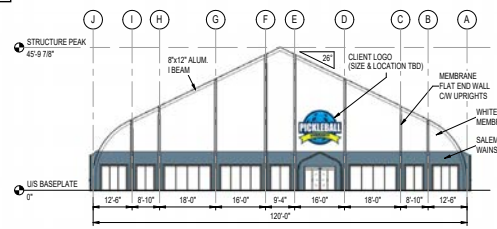


**GENERAL NOTES:**

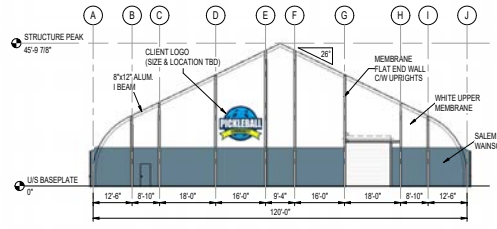
1. ALL PERSONNEL DOORS ON FRAMING MEMBERS & HOODS AS NOTED.
2. STRUCTURE TO BE INSULATED WITH FIBERGLASS BATT INSULATION ON FRAMER LINER, TO CARLIGHT PANEL LEVEL ONLY (NO HOODS).
3. INNER & OUTER MEMBRANE TO BE FINISHED TO CONCRETE USING ALUM. FLAT BATT.
4. STRUCTURE MEMBRANE MEETS NFPA 701 CALIFORNIA STATE FIRE MARSHAL, AERIALS, CANALIC 318 & CANALIC 312 SPECIFICATIONS.
5. THIS STRUCTURE IS DESIGNED TO BE PRESSURIZED. THE PRESSURE OF THE STRUCTURE SHALL BE KEPT CLEAR.
6. WHEN PRESSURIZING, THE VENTILATION OR AIR CONDITIONING SYSTEM FOR ANY TYPE OF BUILDING IS IMPORTANT TO ENSURE THAT THIS SYSTEM INTAKES AIR FROM OUTSIDE. EXPANDED AT ANY OPEN TIME. THIS PROCEDURE WILL BE IN FULL FORCE. PRESSURE BEING MAINTAINED COMPLETELY. IF NEGATIVE PRESSURE EXISTS WITHIN THE STRUCTURE, IT WILL BE SPECIFICALLY TO OPEN DOORS AND MEMBRANE WILL BE DRAWN INTO THE STRUCTURE.
7. ALL INTERIOR WALLS & PARTITIONS IF APPLICABLE TO BE FREE STANDING & INDEPENDENT OF SPRUNG STRUCTURE.



4 EXTERIOR VIEW RENDER 1  
885.0



5 RIGHT ELEVATION  
885.0 1/16" = 1'-0"



6 LEFT ELEVATION  
885.0 1/16" = 1'-0"

COLORS ON THESE ELEVATIONS MAY VARY SIGNIFICANTLY DEPENDING ON PRINTER OR MONITOR. PLEASE REFER TO MEMBRANE SAMPLES FOR ACTUAL COLORS.

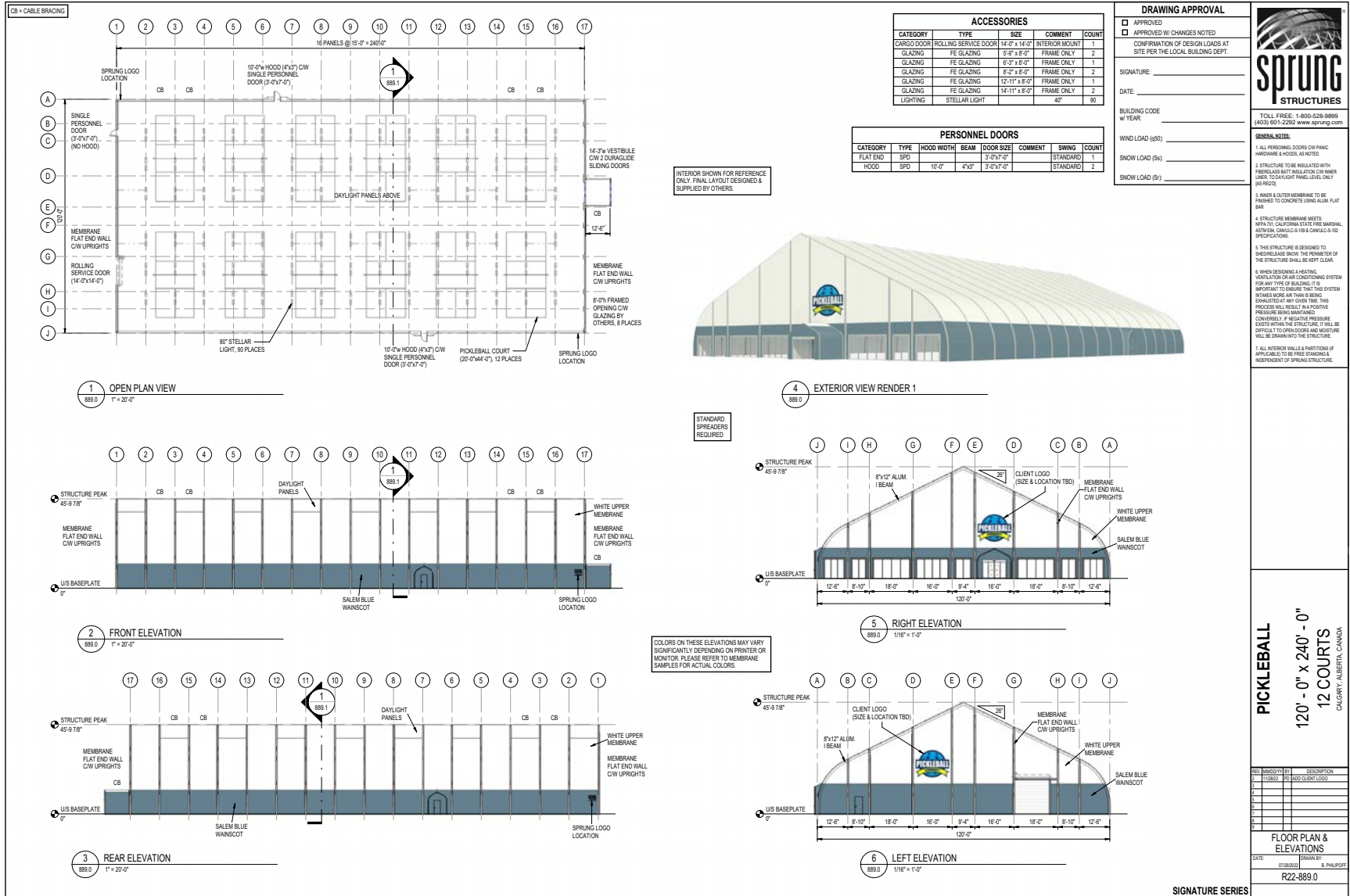
**PICKLEBALL**  
 120'-0" x 330'-0"  
 16 COURTS  
 CALGARY, ALBERTA, CANADA

REV.	DATE	DESCRIPTION
0	07/26/2023	ISSUE FOR PERMIT
1	07/26/2023	ADD CLIENT LOGO
2		
3		
4		
5		
6		

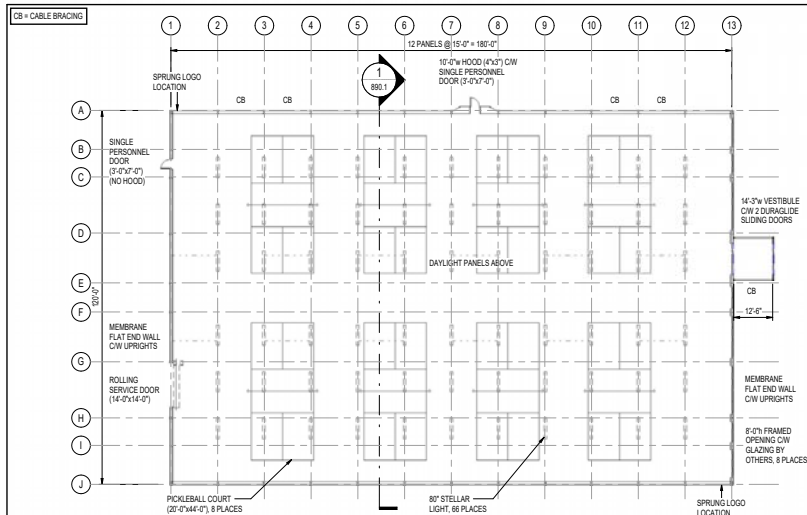
**FLOOR PLAN & ELEVATIONS**  
 DATE: 07/26/2023  
 DRAWN BY: B. PHILIPPO  
 R22-885.0

SIGNATURE SERIES

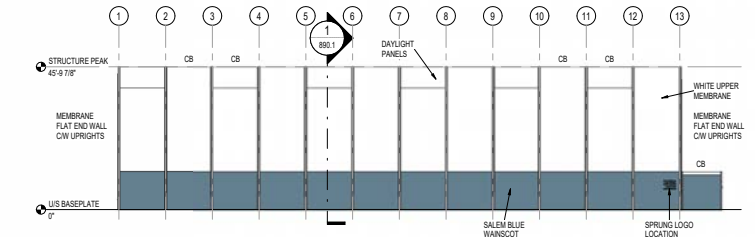
# 12 COURT LAYOUT



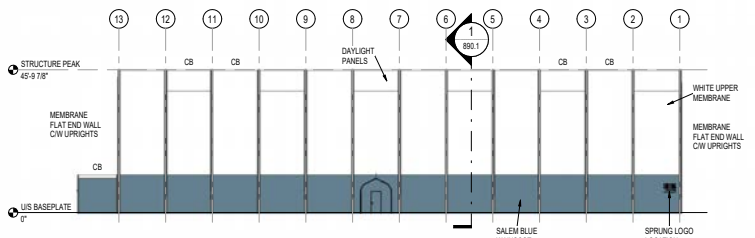
# 8 COURT LAYOUT



1 OPEN PLAN VIEW  
880.0 1/16" = 1'-0"



2 FRONT ELEVATION  
880.0 1/16" = 1'-0"



3 REAR ELEVATION  
880.0 1/16" = 1'-0"

INTERIOR SHOWN FOR REFERENCE ONLY. FINAL LAYOUT DESIGNED & SUPPLIED BY OTHERS.

STANDARD SPREADERS REQUIRED

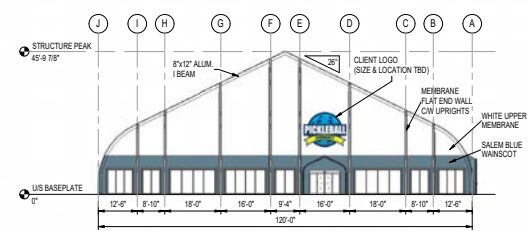
COLORS ON THESE ELEVATIONS MAY VARY SIGNIFICANTLY DEPENDING ON PRINTER OR MONITOR. PLEASE REFER TO MEMBRANE SAMPLES FOR ACTUAL COLORS.

ACCESSORIES				
CATEGORY	TYPE	SIZE	COMMENT	COUNT
CARGO DOOR	ROLLING SERVICE DOOR	14'-0" x 8'-0"	INTERIOR MOUNT	1
GLAZING	FE GLAZING	5'-0" x 8'-0"	FRAME ONLY	2
GLAZING	FE GLAZING	8'-0" x 8'-0"	FRAME ONLY	1
GLAZING	FE GLAZING	8'-0" x 8'-0"	FRAME ONLY	2
GLAZING	FE GLAZING	12'-11" x 8'-0"	FRAME ONLY	1
GLAZING	FE GLAZING	14'-11" x 8'-0"	FRAME ONLY	2
LIGHTING	STELLAR LIGHT		40"	86

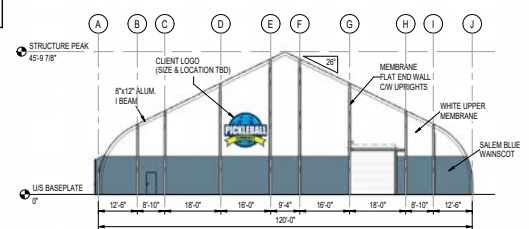
PERSONNEL DOORS							
CATEGORY	TYPE	HOOD WIDTH	BEAM	DOOR SIZE	COMMENT	SWING	COUNT
FLAT END	SPD	10'-0"	4"x3"	3'-0"x7'-0"	STANDARD		1



4 EXTERIOR VIEW RENDER 1  
880.0



5 RIGHT ELEVATION  
880.0 1/16" = 1'-0"



6 LEFT ELEVATION  
880.0 1/16" = 1'-0"

**DRAWING APPROVAL**

APPROVED  
 APPROVED BY CHANGES NOTED  
 CONFIRMATION OF DESIGN LOADS AT SITE PER THE LOCAL BUILDING DEPT.

SIGNATURE: \_\_\_\_\_  
 DATE: \_\_\_\_\_

BUILDING CODE # \_\_\_\_\_  
 WIND LOAD (#50) \_\_\_\_\_  
 SNOW LOAD (#4) \_\_\_\_\_  
 SNOW LOAD (#5) \_\_\_\_\_



- GENERAL NOTES:**
1. ALL PERSONNEL DOORS ON FRAMING MEMBRANE & HOOD, AS NOTED.
  2. STRUCTURE TO BE INSULATED WITH FIBREGLOSS BATT INSULATION ON INNER LINER, TO DAYLIGHT PANEL LEVEL ONLY (NO HOOD).
  3. INNER & OUTER MEMBRANE TO BE FINISHED TO CONCRETE USING ALUM. FLAT BATT.
  4. STRUCTURE MEMBRANE MEETS NFPA 701, CALIFORNIA STATE FIRE MARSHAL, AERIAL, CANALIC 518 & CANALIC 512 SPECIFICATIONS.
  5. THIS STRUCTURE IS DESIGNED TO BE PRESERVE SHOWN. THE PERIMETER OF THE STRUCTURE SHALL BE KEPT CLEAR.
  6. WHEN RESERVING AND/OR VENTILATION OR AIR CONDITIONING SYSTEM FOR ANY TYPE OF BUILDING IT IS IMPORTANT TO ENSURE THAT THIS SYSTEM INTRODUCES AIR FROM OUTSIDE. EXPANDED AT ANY GIVEN TIME. THIS PROCEDURE WILL BE IN FULL FORCE. PRESSURE BEING MAINTAINED. CONCRETE & RESERVE PRESSURE EXISTS WITHIN THE STRUCTURE. IT WILL BE DIFFICULT TO OPEN DOORS AND MEMBRANE WILL BE DRAWN INTO THE STRUCTURE.
  7. ALL INTERIOR WALLS & PARTITIONS IF APPLICABLE TO BE FREE STANDING & INDEPENDENT OF SPRUNG STRUCTURE.

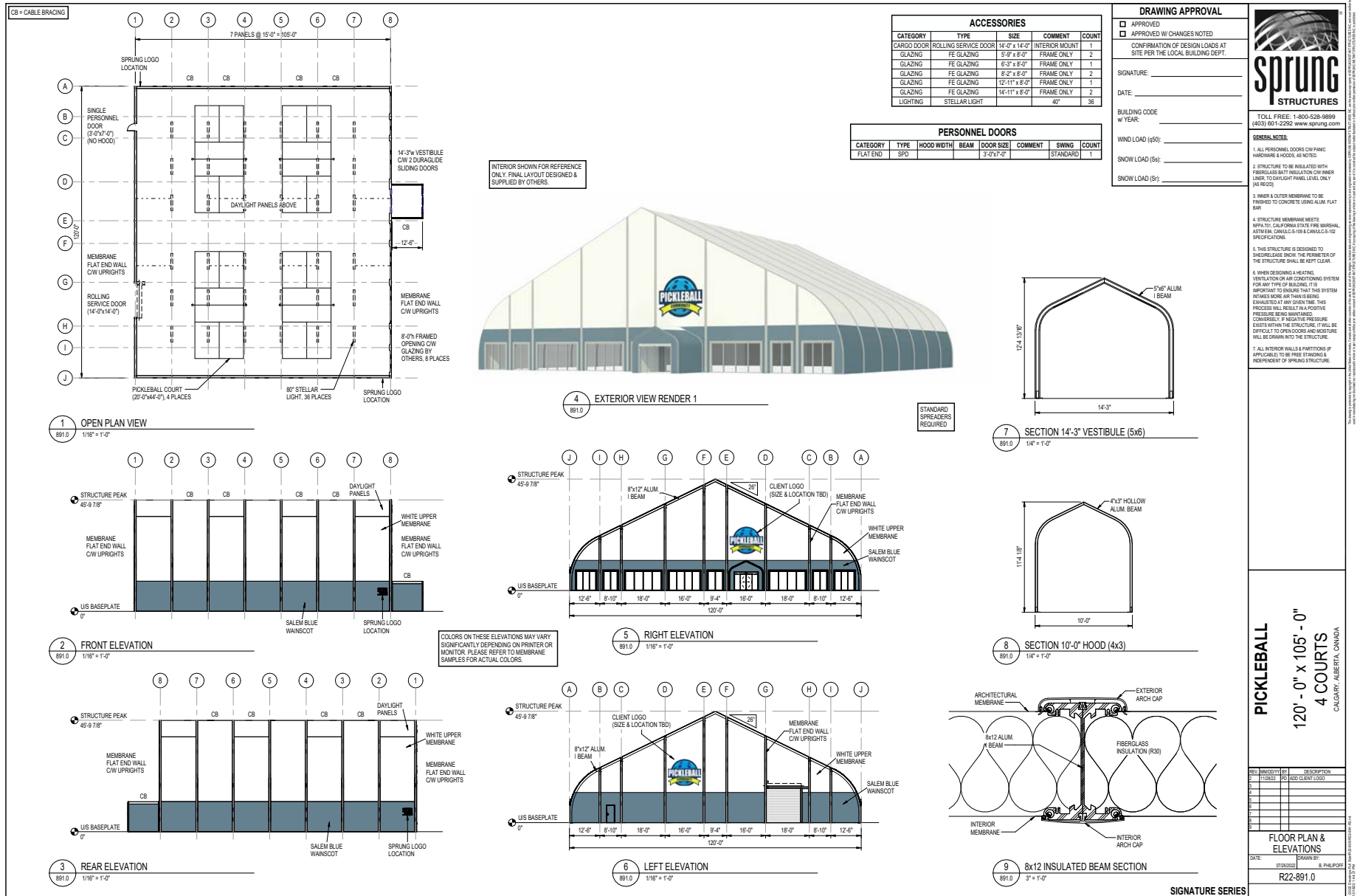
**PICKLEBALL**  
 120' - 0" x 180' - 0"  
 8 COURTS  
 CALGARY, ALBERTA, CANADA

REV	DATE	DESCRIPTION
0	11/09/21	ISSUE FOR PERMIT
1	11/09/21	ADD CLIENT LOGO
2		
3		
4		
5		
6		
7		
8		
9		

**FLOOR PLAN & ELEVATIONS**

DATE: 07/26/2023 DRAWN BY: S. PHILIPPOFF  
 R22-880.0

# 4 COURT LAYOUT





**A Faster  
Way to Build**

---

### ABOUT SPRUNG

---

Since 1887, we've been engineering the world's most innovative, versatile and reliable building solutions.

Sprung Structures provides rapid-response buildings to a wide range of leading businesses and organizations including global armed forces, the natural resources industry, the manufacturing, commercial gaming and education sectors, disaster recovery, healthcare and aviation, as well as to the sports and recreation industry. Our patented tensioned membrane technology outperforms other building alternatives with a faster, better build.



**I would highly recommend a Sprung building to anyone interested in constructing an 'out-of-the-box' facility."**

– Pastor Olin McSherry,  
RWOC Director of Development  
Relentless Life Center



**KEEP THE BALL  
IN YOUR COURT**

Let's talk about the design and cost  
for your custom pickleball facility

---

[sprung.com/pickleball](https://sprung.com/pickleball) | [info@sprung.com](mailto:info@sprung.com) | 1 800 528 9899