



# High Performance Building Solutions

Engineered & Manufactured by Sprung Instant Structures



## Harvard Business School

Massachusetts  
Interim Dining

### Project Report:

Harvard Business School's Kresge Hall, which was built in the 1950s and served primarily as an executive education dining center, was slated to be torn down to make space for a replacement facility. While the Business School stood to gain an important new building, a pressing question became what to do in the interim. How could Harvard accommodate executives who attend the executive education program.



The Harvard Business School needed a solution that could be mobilized quickly, cost effectively, sustainably and, above all, not look like a temporary solution. The interim dining facility needed to fit well aesthetically with other buildings on campus.

After much deliberation, Harvard Business School opted to go with an architectural membrane structure and high-tech modular kitchen structures whose refined finishes and exterior appearance fit the university's objectives.

Sprung and Kitchens to Go (KTG) teamed up to supply an 80' x 110' wide Sprung structure.

### **FAST FACTS**

- 80' x 110' Sprung Structure
- Johns Manville R25 Fiberglass insulation
- Custom Exterior Color Match Kynar Architectural Membrane
- Glazing Walls
- Translucent Daylight Panels
- Seats 400
- Meals Served 3 Times Daily
- Sprung Structure Portion Erected in 29 Days
- Entire Project Completed Within 6 Months

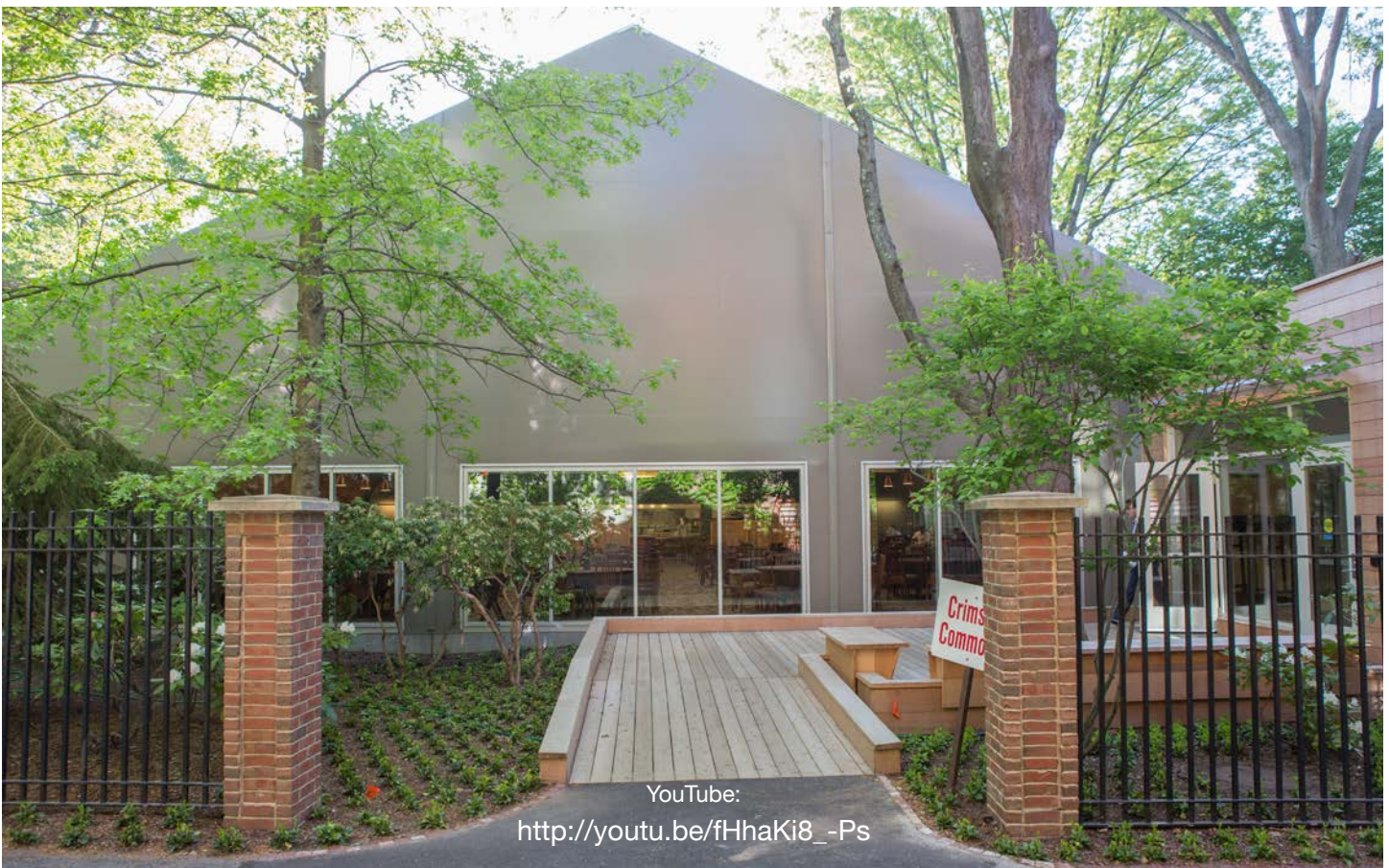
### **Architectural Record-Continuing Education Center**

Project Link:

<https://continuingeducation.bnppmedia.com/course.php?L=230&C=1220&P=1>

### **Sprung Structures and Kitchens to Go - Harvard Business School Dining Facilities Video**

<http://www.sprung.com/video/harvard-business-school-dining-facilities>



YouTube:

[http://youtu.be/fHhaKi8\\_-Ps](http://youtu.be/fHhaKi8_-Ps)

**Shepley Bulfinch**

Shepley Bulfinch Architects & Interiors  
 200 State Street  
 Boston, MA 02109  
 617.452.2000  
 www.shepleybulfinch.com

**LeMessurier Consultants**

**Fitzmeyer & Tocci**

**SLB GROUP**

**Reed Hilderbrand**

**Hughes Associates**

NO. 10001	SCALE: 1/8" = 1'-0"	DATE: 05/17/13
NO. 10002	SCALE: 1/8" = 1'-0"	DATE: 05/17/13
NO. 10003	SCALE: 1/8" = 1'-0"	DATE: 05/17/13
NO. 10004	SCALE: 1/8" = 1'-0"	DATE: 05/17/13
NO. 10005	SCALE: 1/8" = 1'-0"	DATE: 05/17/13
NO. 10006	SCALE: 1/8" = 1'-0"	DATE: 05/17/13
NO. 10007	SCALE: 1/8" = 1'-0"	DATE: 05/17/13
NO. 10008	SCALE: 1/8" = 1'-0"	DATE: 05/17/13
NO. 10009	SCALE: 1/8" = 1'-0"	DATE: 05/17/13
NO. 10010	SCALE: 1/8" = 1'-0"	DATE: 05/17/13
NO. 10011	SCALE: 1/8" = 1'-0"	DATE: 05/17/13
NO. 10012	SCALE: 1/8" = 1'-0"	DATE: 05/17/13
NO. 10013	SCALE: 1/8" = 1'-0"	DATE: 05/17/13
NO. 10014	SCALE: 1/8" = 1'-0"	DATE: 05/17/13
NO. 10015	SCALE: 1/8" = 1'-0"	DATE: 05/17/13
NO. 10016	SCALE: 1/8" = 1'-0"	DATE: 05/17/13
NO. 10017	SCALE: 1/8" = 1'-0"	DATE: 05/17/13
NO. 10018	SCALE: 1/8" = 1'-0"	DATE: 05/17/13
NO. 10019	SCALE: 1/8" = 1'-0"	DATE: 05/17/13
NO. 10020	SCALE: 1/8" = 1'-0"	DATE: 05/17/13
NO. 10021	SCALE: 1/8" = 1'-0"	DATE: 05/17/13
NO. 10022	SCALE: 1/8" = 1'-0"	DATE: 05/17/13
NO. 10023	SCALE: 1/8" = 1'-0"	DATE: 05/17/13
NO. 10024	SCALE: 1/8" = 1'-0"	DATE: 05/17/13
NO. 10025	SCALE: 1/8" = 1'-0"	DATE: 05/17/13
NO. 10026	SCALE: 1/8" = 1'-0"	DATE: 05/17/13
NO. 10027	SCALE: 1/8" = 1'-0"	DATE: 05/17/13
NO. 10028	SCALE: 1/8" = 1'-0"	DATE: 05/17/13
NO. 10029	SCALE: 1/8" = 1'-0"	DATE: 05/17/13
NO. 10030	SCALE: 1/8" = 1'-0"	DATE: 05/17/13
NO. 10031	SCALE: 1/8" = 1'-0"	DATE: 05/17/13
NO. 10032	SCALE: 1/8" = 1'-0"	DATE: 05/17/13
NO. 10033	SCALE: 1/8" = 1'-0"	DATE: 05/17/13
NO. 10034	SCALE: 1/8" = 1'-0"	DATE: 05/17/13
NO. 10035	SCALE: 1/8" = 1'-0"	DATE: 05/17/13
NO. 10036	SCALE: 1/8" = 1'-0"	DATE: 05/17/13
NO. 10037	SCALE: 1/8" = 1'-0"	DATE: 05/17/13
NO. 10038	SCALE: 1/8" = 1'-0"	DATE: 05/17/13
NO. 10039	SCALE: 1/8" = 1'-0"	DATE: 05/17/13
NO. 10040	SCALE: 1/8" = 1'-0"	DATE: 05/17/13
NO. 10041	SCALE: 1/8" = 1'-0"	DATE: 05/17/13
NO. 10042	SCALE: 1/8" = 1'-0"	DATE: 05/17/13
NO. 10043	SCALE: 1/8" = 1'-0"	DATE: 05/17/13
NO. 10044	SCALE: 1/8" = 1'-0"	DATE: 05/17/13
NO. 10045	SCALE: 1/8" = 1'-0"	DATE: 05/17/13
NO. 10046	SCALE: 1/8" = 1'-0"	DATE: 05/17/13
NO. 10047	SCALE: 1/8" = 1'-0"	DATE: 05/17/13
NO. 10048	SCALE: 1/8" = 1'-0"	DATE: 05/17/13
NO. 10049	SCALE: 1/8" = 1'-0"	DATE: 05/17/13
NO. 10050	SCALE: 1/8" = 1'-0"	DATE: 05/17/13
NO. 10051	SCALE: 1/8" = 1'-0"	DATE: 05/17/13
NO. 10052	SCALE: 1/8" = 1'-0"	DATE: 05/17/13
NO. 10053	SCALE: 1/8" = 1'-0"	DATE: 05/17/13
NO. 10054	SCALE: 1/8" = 1'-0"	DATE: 05/17/13
NO. 10055	SCALE: 1/8" = 1'-0"	DATE: 05/17/13
NO. 10056	SCALE: 1/8" = 1'-0"	DATE: 05/17/13
NO. 10057	SCALE: 1/8" = 1'-0"	DATE: 05/17/13
NO. 10058	SCALE: 1/8" = 1'-0"	DATE: 05/17/13
NO. 10059	SCALE: 1/8" = 1'-0"	DATE: 05/17/13
NO. 10060	SCALE: 1/8" = 1'-0"	DATE: 05/17/13
NO. 10061	SCALE: 1/8" = 1'-0"	DATE: 05/17/13
NO. 10062	SCALE: 1/8" = 1'-0"	DATE: 05/17/13
NO. 10063	SCALE: 1/8" = 1'-0"	DATE: 05/17/13
NO. 10064	SCALE: 1/8" = 1'-0"	DATE: 05/17/13
NO. 10065	SCALE: 1/8" = 1'-0"	DATE: 05/17/13
NO. 10066	SCALE: 1/8" = 1'-0"	DATE: 05/17/13
NO. 10067	SCALE: 1/8" = 1'-0"	DATE: 05/17/13
NO. 10068	SCALE: 1/8" = 1'-0"	DATE: 05/17/13
NO. 10069	SCALE: 1/8" = 1'-0"	DATE: 05/17/13
NO. 10070	SCALE: 1/8" = 1'-0"	DATE: 05/17/13
NO. 10071	SCALE: 1/8" = 1'-0"	DATE: 05/17/13
NO. 10072	SCALE: 1/8" = 1'-0"	DATE: 05/17/13
NO. 10073	SCALE: 1/8" = 1'-0"	DATE: 05/17/13
NO. 10074	SCALE: 1/8" = 1'-0"	DATE: 05/17/13
NO. 10075	SCALE: 1/8" = 1'-0"	DATE: 05/17/13
NO. 10076	SCALE: 1/8" = 1'-0"	DATE: 05/17/13
NO. 10077	SCALE: 1/8" = 1'-0"	DATE: 05/17/13
NO. 10078	SCALE: 1/8" = 1'-0"	DATE: 05/17/13
NO. 10079	SCALE: 1/8" = 1'-0"	DATE: 05/17/13
NO. 10080	SCALE: 1/8" = 1'-0"	DATE: 05/17/13
NO. 10081	SCALE: 1/8" = 1'-0"	DATE: 05/17/13
NO. 10082	SCALE: 1/8" = 1'-0"	DATE: 05/17/13
NO. 10083	SCALE: 1/8" = 1'-0"	DATE: 05/17/13
NO. 10084	SCALE: 1/8" = 1'-0"	DATE: 05/17/13
NO. 10085	SCALE: 1/8" = 1'-0"	DATE: 05/17/13
NO. 10086	SCALE: 1/8" = 1'-0"	DATE: 05/17/13
NO. 10087	SCALE: 1/8" = 1'-0"	DATE: 05/17/13
NO. 10088	SCALE: 1/8" = 1'-0"	DATE: 05/17/13
NO. 10089	SCALE: 1/8" = 1'-0"	DATE: 05/17/13
NO. 10090	SCALE: 1/8" = 1'-0"	DATE: 05/17/13
NO. 10091	SCALE: 1/8" = 1'-0"	DATE: 05/17/13
NO. 10092	SCALE: 1/8" = 1'-0"	DATE: 05/17/13
NO. 10093	SCALE: 1/8" = 1'-0"	DATE: 05/17/13
NO. 10094	SCALE: 1/8" = 1'-0"	DATE: 05/17/13
NO. 10095	SCALE: 1/8" = 1'-0"	DATE: 05/17/13
NO. 10096	SCALE: 1/8" = 1'-0"	DATE: 05/17/13
NO. 10097	SCALE: 1/8" = 1'-0"	DATE: 05/17/13
NO. 10098	SCALE: 1/8" = 1'-0"	DATE: 05/17/13
NO. 10099	SCALE: 1/8" = 1'-0"	DATE: 05/17/13
NO. 10100	SCALE: 1/8" = 1'-0"	DATE: 05/17/13

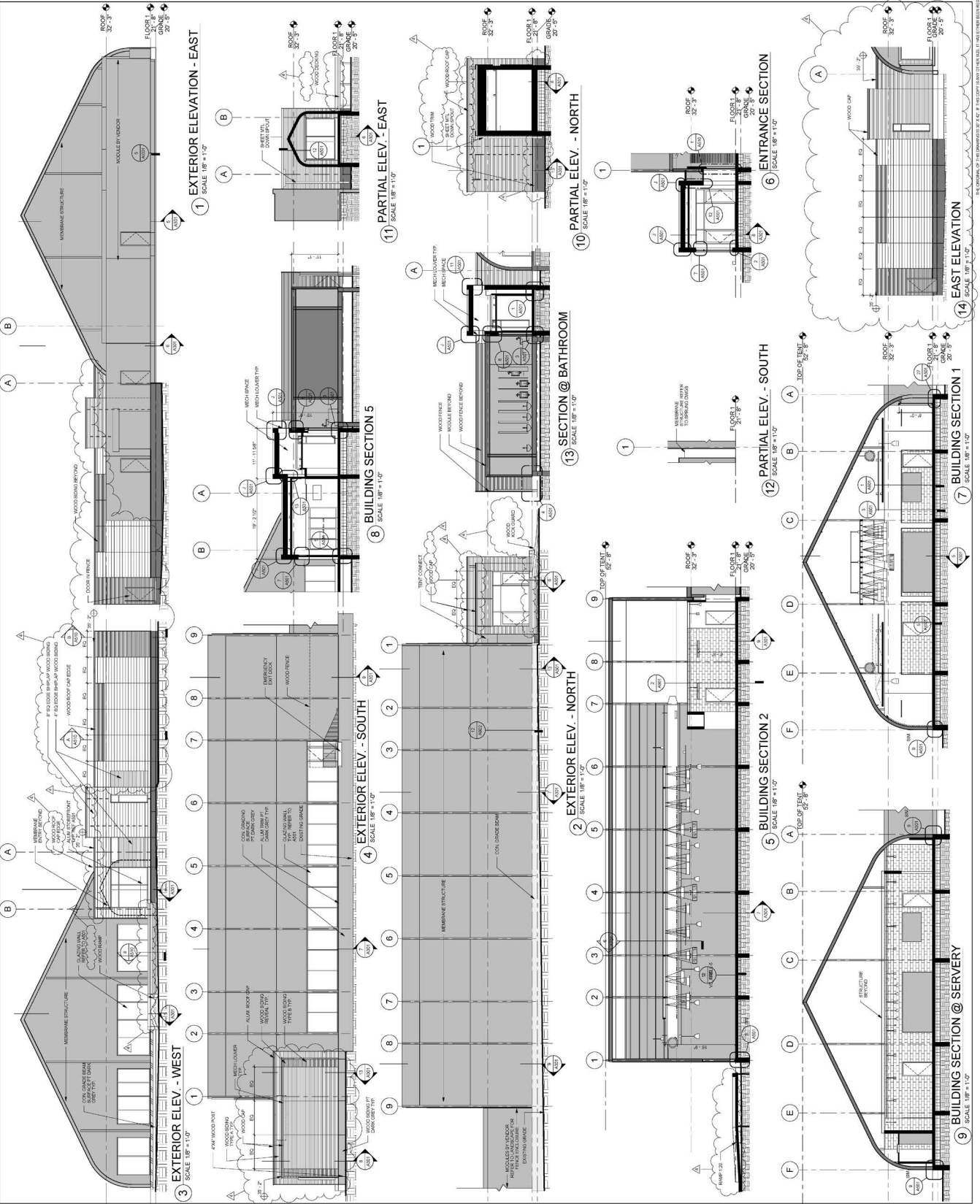
**HARVARD BUSINESS SCHOOL**

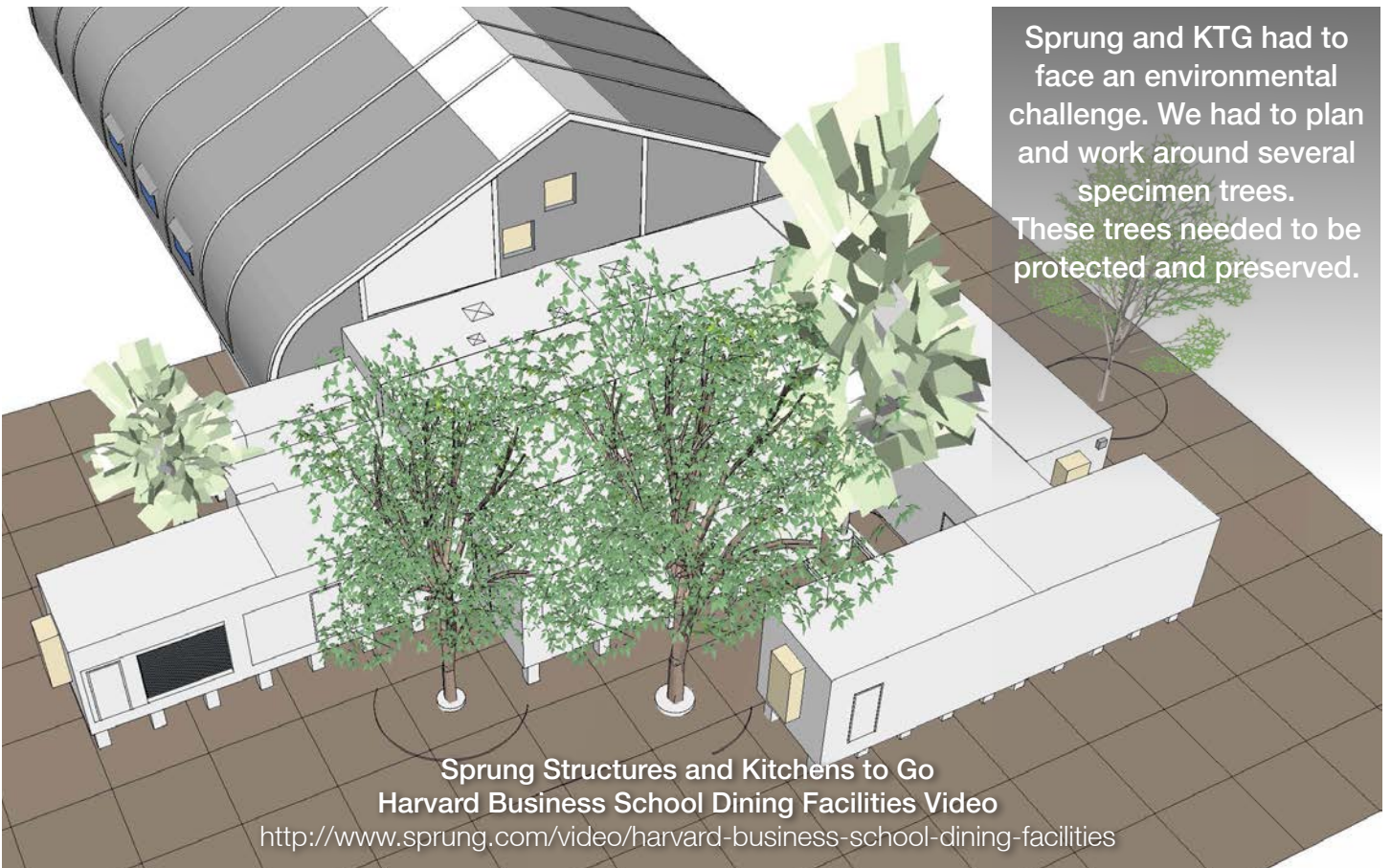
**INTERIM DINING**  
 37A Harvard Way, Boston, MA 02163

**EXTERIOR ELEVATIONS AND BUILDING SECTIONS**

18" = 1'-0" 05/17/13  
 4995

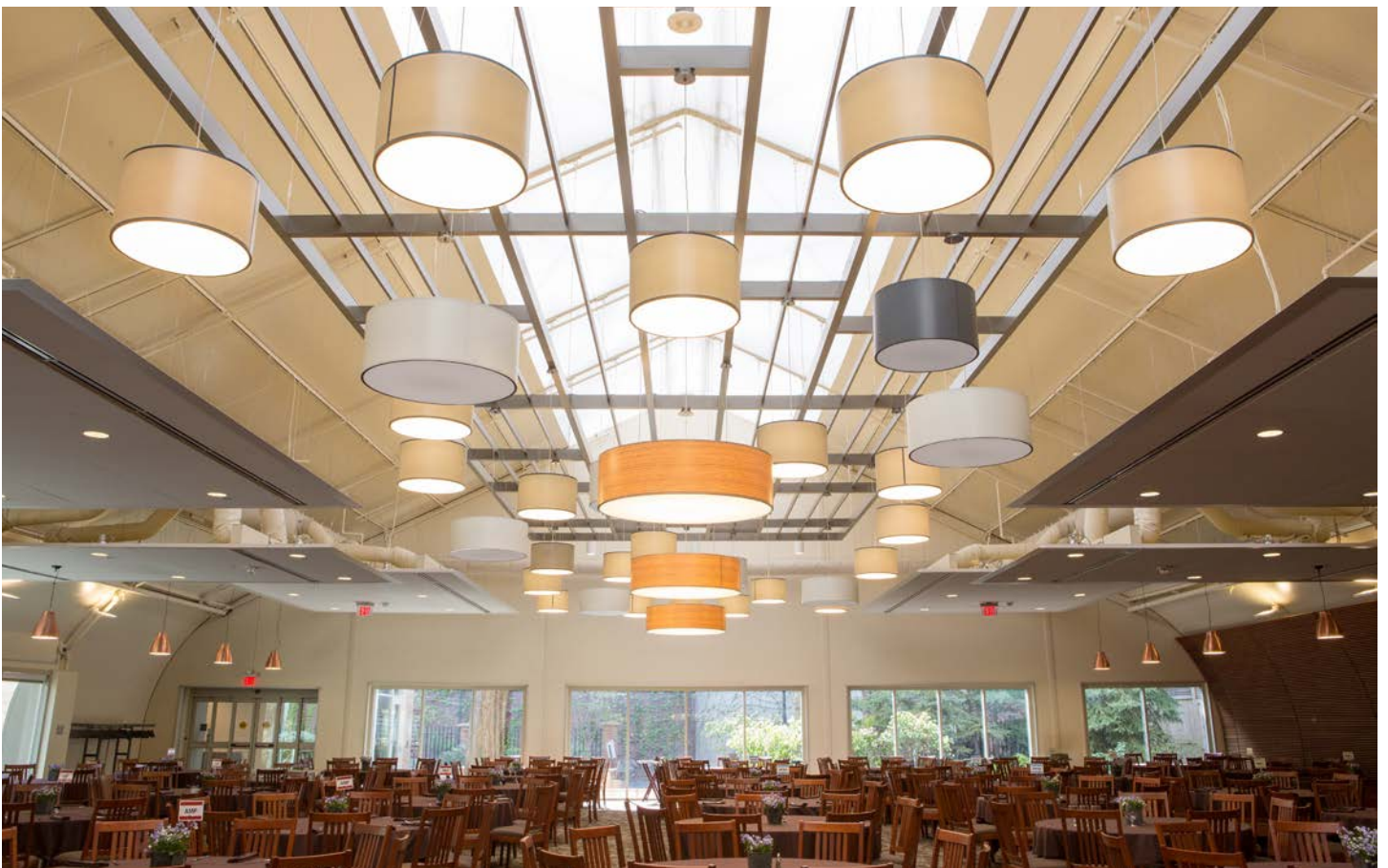
PERMIT SET  
**A301**





Sprung and KTG had to face an environmental challenge. We had to plan and work around several specimen trees. These trees needed to be protected and preserved.

Sprung Structures and Kitchens to Go  
Harvard Business School Dining Facilities Video  
<http://www.sprung.com/video/harvard-business-school-dining-facilities>







Sprung Structures and Kitchens to Go  
Harvard Business School Dining Facilities Video  
<http://www.sprung.com/video/harvard-business-school-dining-facilities>









For more information on creating your cost effective and efficient dining facility:  
<https://continuingeducation.bnppmedia.com/course.php?L=230&C=1220&P=1>