

Progress Report "Mammoth Lakes"



Jonathon Fenton

johnathon.fenton@sprung.com

Thomas Wenger

thomas.wenger@instaplex.ch



Table of content

• Impressions	Page 3
• May 2022, substructure erection	Page 4
• June 2022, initial membrane installation	Page 6
• August 2022, completion of substructure	Page 9
• September 2022, completion of outer membrane	Page 11
• Mid September 2022, insulation installation	Page 12
• November 2022, installation of inner membrane	Page 14
• December 2022	Page 15
• February 2023 (unexpected snow load test)	Page 16
• Links	Page 18

Impressions



Table of content

May 2022

Foundation ready, substructure erection:

During the 2nd part of 2021 the foundation for the new Community Recreation Center in Mammoth Lakes California was constructed and prepared for the erection of the Sprung Structure. The aluminium substructure was delivered to the construction-site where, after off loading the process of erecting the structure was started.

[Mammoth Mountain](#) is considered one of the finest Alpine Skiing resorts in North America.

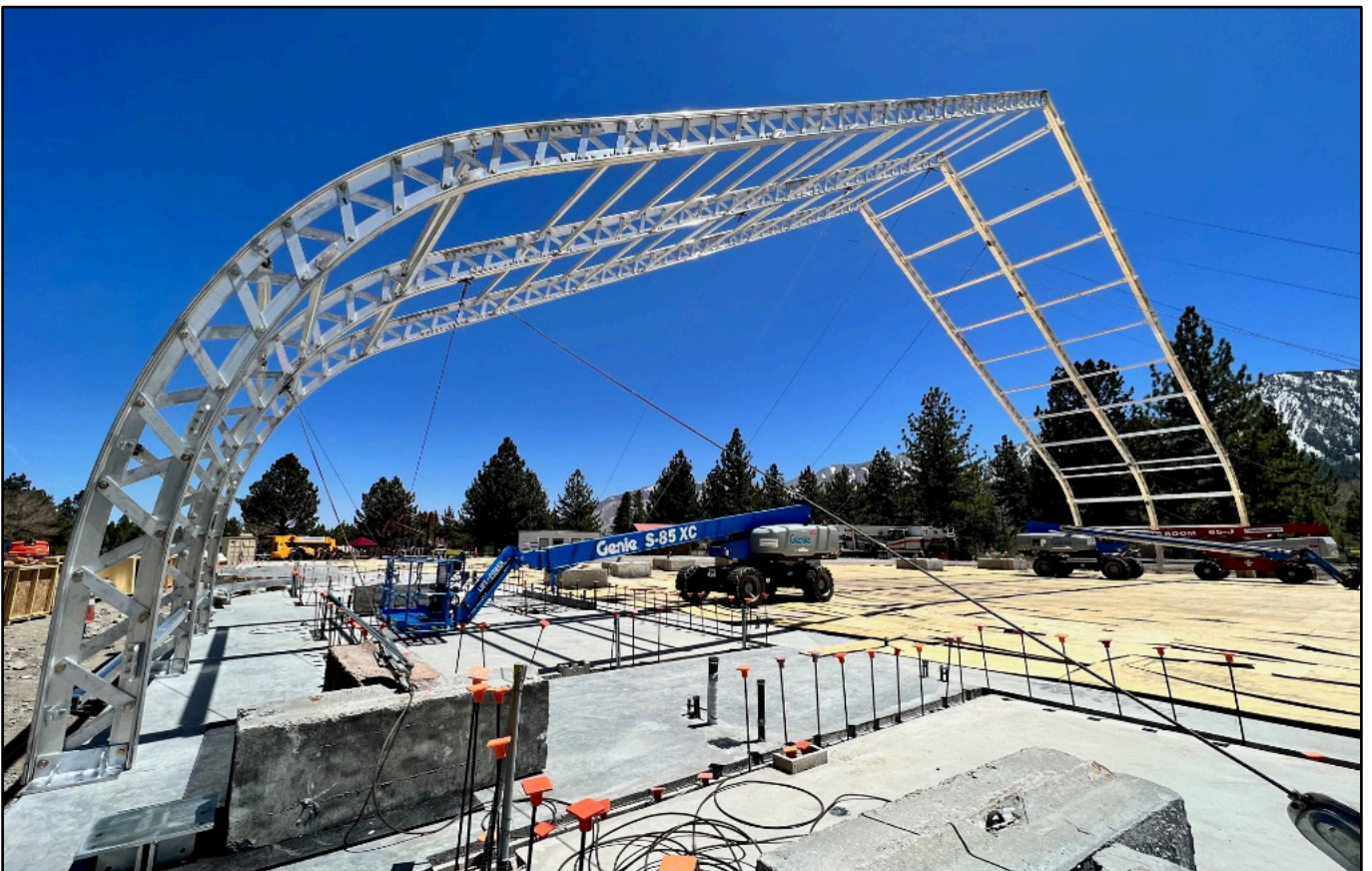
The new **3736m² (42.6m x 87.8m)** and **15.4m high Sprung Ice Rink** is located at **2400m** above sea level!



[Table of content](#)

Mid May 2022

Center beams, positioning:

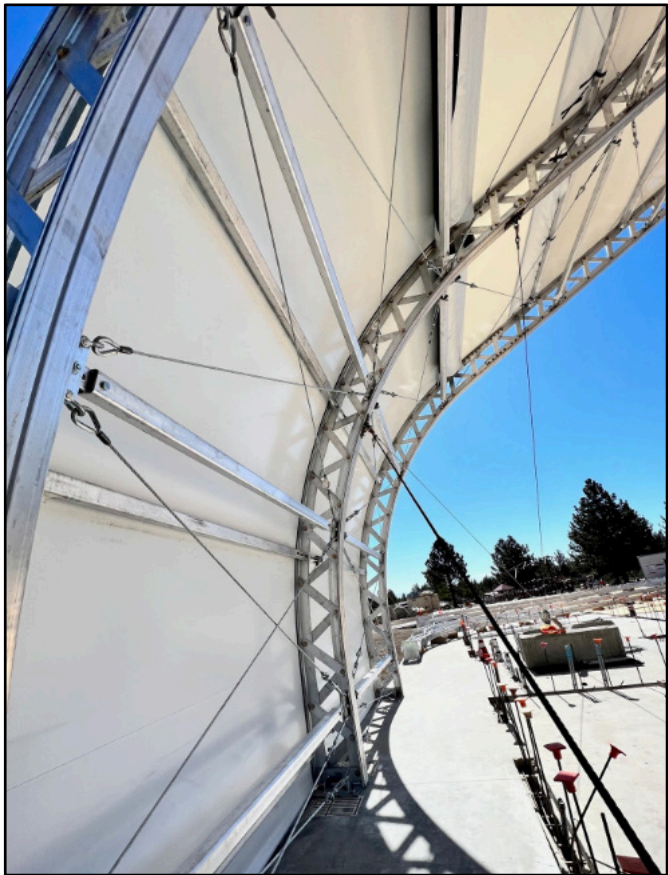


[Table of content](#)



June 2022

Center beams, membrane installation:



[Table of content](#)



TOML V 1.1

www.instaplex.ch
info@instaplex.ch



July 2022



Table of content



TOML V 1.1

www.instaplex.ch
info@instaplex.ch



Mid July 2022

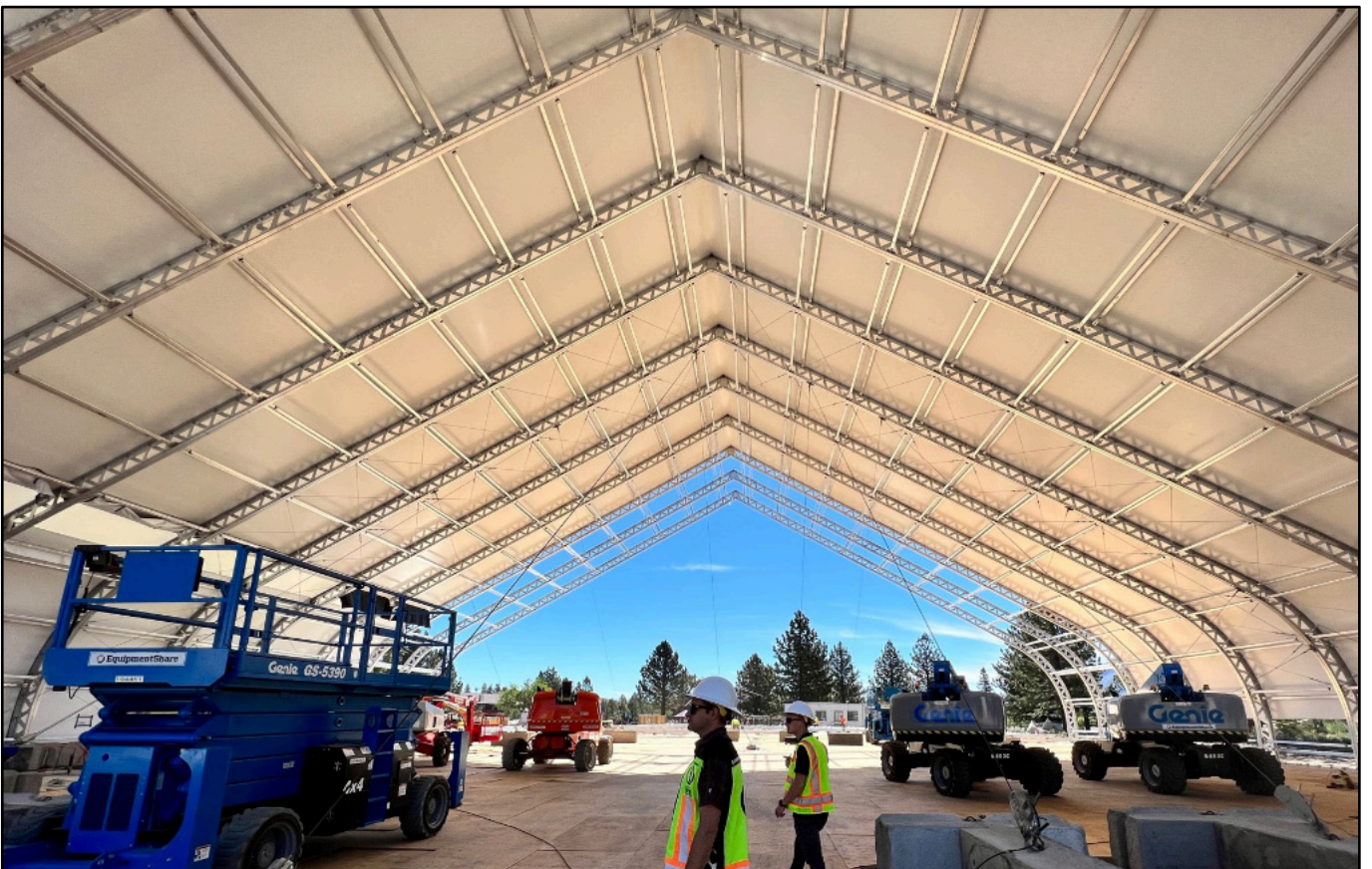


Table of content



August 2022



Table of content



TOML V 1.1

www.instaplex.ch
info@instaplex.ch



Mid August 2022



[Table of content](#)



TOML V 1.1

www.instaplex.ch
info@instaplex.ch



September 2022

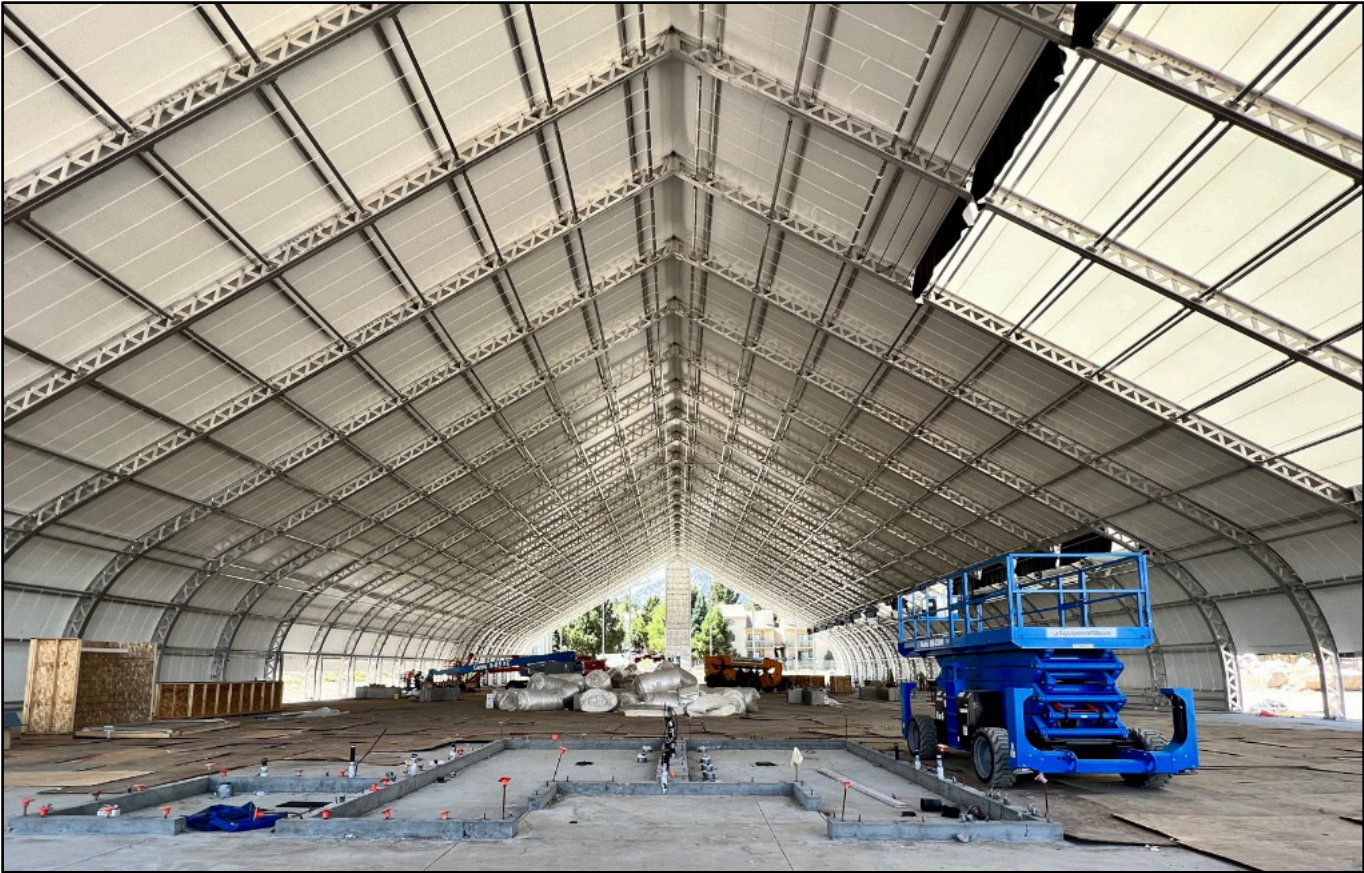


Table of content



Mid September 2022

High Performance Insulation

After the completion of the aluminium substructure and the installation of the tensioned outer membrane the new ice rink roofing was completed.

The new Sprung sport centre will be one of the **most energy efficient ice rinks ever build**. Sprung's unique **high performance insulation** is key to reach this ambitious energy efficiency target.

The installation process is a very simple and labor efficient task.



[Table of content](#)

October 2022



Table of content



TOML V 1.1

www.instaplex.ch
info@instaplex.ch



November 2022

Inner membrane installation:



[Table of content](#)

December 2022



[Table of content](#)

February 2023

Unexpected snow load test

Exactly during the construction of the Sprung ice rink, Mammoth Lakes experienced an exceptional winter. The region received a staggering **6 meters of snow in 20 days!**

The town was literally buried and the Sprung Structure was no exception.

On the interior, progress has been made installing the large HVAC air-handling ducts, the fire suppression system and the interior LED lights hung 7 meters from the surface.



[Table of content](#)



Table of content



Links

- Video Animation Sprung Structure erection sequence
- instaPlex Eishallen
- www.sprungarena.com
- Brochure Sprung Arenas
- Broschüre instaPlex Deutsch
- Brochure instaPlex English
- Documentazione instaPlex Italiano
- instaPlex online documents
- instaPlex online Videos
- instaPlex Flyer Sporthallen
- Sprung Flyer Regis College



[Table of content](#)