

Healthcare Facilities



A Faster Way to Build



Lease or purchase



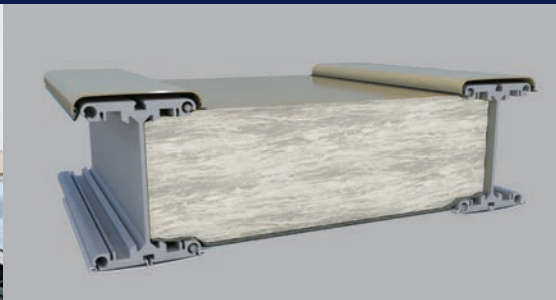
Large clearspan interiors



Limited foundation requirements



Interior space can be reconfigured as needed



Optional highly efficient fiberglass insulation system



Immediate delivery from inventory



A Faster Way to Build

Immediate engineered relocatable building solutions for the health care industry

North America toll free: 1 800 528.9899
US direct dial: 801 280.1555
Canada direct dial: 403 601.2292

info@sprung.com

Healthcare Facilities

A Faster Way to Build
Engineered & Manufactured by Sprung Instant Structures



**Joseph Brant Hospital
Burlington, Ontario
50' wide x 165' long**

Sprung Structures and BLT Construction teamed up to supply and construct a temporary Pandemic Response Unit to expand the hospital's bed capacity in preparation for the anticipated surge of COVID-19 patients. This modular structure was built on the hospital grounds and connected to the south tower. It will provide 93 additional beds for patients who require hospitalization and treatment for COVID-19. The construction of the Pandemic Response Unit will allow the hospital to preserve valuable bed space. Physicians from the Burlington community are volunteering to provide patient care in the Pandemic Response Unit, treating COVID-19 positive patients with acute care needs who may require oxygen therapy and ongoing monitoring.

**Mississauga Trillium Hospital
Mississauga, Ontario
Two 50' wide by 165' long**

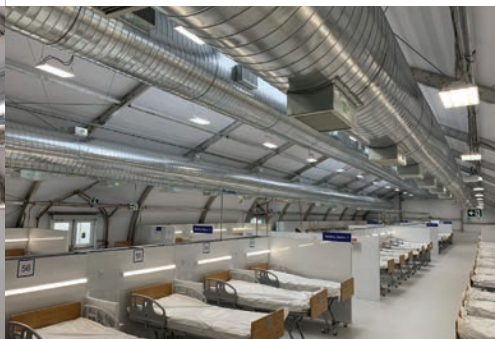
Already home to one of the province's COVID-19 assessment centres, the Mississauga Hospital needed to increase their capacity for a potential influx of positive COVID-19 patients based on Public Health Ontario projections. Delivered in 4 days and built in 14 days this temporary pandemic response unit is ready for occupancy. The Mississauga Trillium Hospital now has 90 additional beds ready to respond to the expected surge in Covid-19 patients. This engineered solution is designed to meet extreme wind loads and shed snow. The hospital plans to dismantle and store the facility so that it can be re-purposed at a future date.

**Peter Lougheed Centre
Calgary, Alberta
50' wide x 165' long**

The Province of Alberta anticipated that it needed 2,200 extra hospital beds to address the anticipated Covid -19 surge. Most of the additional hospital beds were addressed through the cancellation of elective surgery however the province needed to find additional space. Sprung Structures recognized the immediate need and donated a Sprung structure to help ramp up capacity by adding 70 additional beds. With the help of Cana Construction, Falkbuilt and Stantec, the Province of Alberta met their goal of achieving additional capacity to fight Covid-19.

Delivery and Construction

- 17 days for Sprung Structure
- Total-time for exterior and interior**
- 22 days finished



Sprung Instant Structures, Inc.
5711 West Dannon Way
West Jordan, Utah 84081

Toll Free: 1 800 528.9899
Direct Dial: 1 801 280.1555
Fax: 1 801 280.7072

Sprung Instant Structures Ltd.
PO Box 62, Maple Leaf Road
Aldersyde, Alberta, Canada T0L 0A0

Toll Free: 1 800 528.9899
Direct Dial: 1 403 601.2292
Fax: 1 403 601.4833

Sprung Structures DWC-LLC
PO Box 712185, Dubai, United Arab Emirates
Telephone: +971.508312274

Sprung Instant Structures E.C.
Office 45 Building 225, Road 28, Block 328
Siqqayyah Manama 999, Bahrain BH 26105
Telephone: 9 733 951 1127

North America toll free:
1 800 528.9899
US direct dial:
801 280.1555
Canada direct dial:
403 601.2292

info@sprung.com